

**HOW TO SAVE FLUFFY'S LIFE WITHOUT
SPENDING \$200,000 TO BECOME AN
EMERGENCY VET**

DISCUSSION ON PET FIRST AID

SPONSORED BY:



DR. GARRET PACTINGER
RESIDENT, EMERGENCY AND CRITICAL CARE
MJR-VHUP
7/21/08

TOPICS WE WILL DISCUSS:

TOPIC 1: BE PREPARED

TOPIC 2: HOW TO KNOW IF IT IS AN EMERGENCY

TOPIC 3: RESPONDING TO AN EMERGENCY

TOPIC 4: COMMON EMERGENCIES

TOPIC 1: BE PREPARED – PET FIRST AID KIT



BE PREPARED...

TOPIC 1: BE PREPARED

**IN ANY TYPE OF EMERGENCY, HAVING SUPPLIES
BEFORE YOU NEED THEM AND KNOWING HOW TO
RESPOND TO A PLAN CAN INCREASE THE
CHANCE OF A POSITIVE OUTCOME.**



TOPIC 1: BE PREPARED – PET FIRST AID KIT

EVERY PET OWNER SHOULD HAVE SOME BASIC MEDICAL SUPPLIES ON HAND. IF YOUR PET HAS A SPECIAL MEDICAL CONDITION, YOU CAN ASK YOUR VETERINARIAN WHAT SPECIFIC ITEMS YOU SHOULD INCLUDE.



TOPIC 1: BE PREPARED – PET FIRST AID KIT

THERE ARE MANY PREMADE KITS YOU CAN BUY IN A STORE OR ONLINE...



TOPIC 2: HOW TO KNOW IF IT IS A MEDICAL EMERGENCY

THE BEST WAY TO RECOGNIZE AND RESPOND TO A MEDICAL EMERGENCY IS TO KNOW WHAT IS NORMAL FOR YOUR PET AND KNOW HOW TO RECOGNIZE AN EMERGENCY.



TOPIC 2: HOW TO KNOW IF IT IS A MEDICAL EMERGENCY

PETS ARE VERY GOOD AT HIDING ILLNESS, AND ONCE THEY SHOW SIGNS, IT MAY BE A SIGN OF ADVANCED DISEASE.

IF YOU ARE EVER UNSURE ABOUT A SITUATION, ALWAYS CALL YOUR VETERINARIAN.

TOPIC 2: HOW TO KNOW IF IT IS A MEDICAL EMERGENCY

KNOW WHAT IS NORMAL!

**AS PET OWNERS AND PET CARETAKERS, YOU ARE
AROUND THEM 365 DAYS PER YEAR.**

**IF YOUR FAMILY VET IS LUCKY, THEY WILL SEE YOUR
PET 2 TIMES PER YEAR.**

**AS A CRITICAL CARE VET, I HOPE TO SEE YOUR PET
...NEVER.**

**FOR THIS REASON, IT IS IMPORTANT YOU ESTABLISH A
BASELINE – WHAT IS NORMAL, AND WHAT IS NOT
NORMAL...**

TOPIC 2: HOW TO KNOW IF IT IS A MEDICAL EMERGENCY

KNOW WHAT IS NORMAL!

**TEMPERATURE
COLOR OF SKIN AND GUMS
DEHYDRATION TEST
HEART RATE
PULSE RATE
RESPIRATION RATE
RESPONSIVENESS**

TOPIC 2: HOW TO KNOW IF IT IS A MEDICAL EMERGENCY

TEMPERATURE:

- **NORMAL - BETWEEN 99 AND 102.5 DEGREES**
- **HOW TO INTERPRET THE TEMPERATURE?**



TOPIC 2: HOW TO KNOW IF IT IS A MEDICAL EMERGENCY

TEMPERATURE:

- **USE A PLASTIC DIGITAL THERMOMETER TO TAKE THE RECTAL TEMPERATURE**
 - **LUBRICATE THE THERMOMETER WITH A WATER BASED LUBRICANT OR PETROLEUM JELLY**
 - **GRASP THE BASE OF THE TAIL AND LIFT IT TO ACCESS THE ANUS.**
 - **INSERT THE THERMOMETER. KEEP A FIRM GRIP ON THE TAIL TO KEEP YOUR PET FROM ESCAPING OR SITTING DOWN.**
 - **ALTERNATIVELY AN AXILLARY TEMPERATURE CAN BE TAKEN.**
- *NOT ALL PETS ENJOY THIS AND 2 PEOPLE MAY BE NEEDED, OR A MUZZLE MAY BE NEEDED.**



TOPIC 2: HOW TO KNOW IF IT IS A MEDICAL EMERGENCY

MUCOUS MEMBRANE COLOR (GUMS):

**NORMAL
OTHER COLORS
PIGMENTATION**



TOPIC 2: HOW TO KNOW IF IT IS A MEDICAL EMERGENCY

HYDRATION/DEHYDRATION:

- **EXTRA LOOSE SKIN AT THE BASE OF NECK, BACK, SIDE OF BODY**
- **WHEN WATER BALANCE IS NORMAL IN THE BODY, YOU CAN PULL ON THIS AREA AND IT WILL RETURN/SPRING BACK TO NORMAL POSITION.**
- **IN STATES OF DEHYDRATION, THE SKIN WILL NOT SPRING BACK AS QUICKLY...**



TOPIC 2: HOW TO KNOW IF IT IS A MEDICAL EMERGENCY

HEART RATE:

SMALL DOGS 100-140 (<20#)
MEDIUM –LARGE DOGS 60-100 (>30#)
CATS 140-240



TOPIC 2: HOW TO KNOW IF IT IS A MEDICAL EMERGENCY

HEART/PULSE RATE: *HEART*

YOU CAN FEEL YOUR PET'S HEARTBEAT AND PULSE SEVERAL DIFFERENT WAYS...

**LAY YOUR PET DOWN ON
HER RIGHT SIDE. (SHE CAN
ALSO STAND IF NEEDED)**

**GENTLY BEND THE LEFT
FRONT LEG AT THE ELBOW
BRINGING IT BACK TO
WHERE IT TOUCHES THE
CHEST**

**PLACE YOUR HAND OVER
THIS AREA TO COUNT
HEARTBEATS**



TOPIC 2: HOW TO KNOW IF IT IS A MEDICAL EMERGENCY

HEART/PULSE RATE: *INNER THIGH*

**LAY YOUR PET DOWN ON EITHER
SIDE.**

**GENTLY LIFT HER UPPER HIND
LEG AWAY FROM THE LOWER
LEG**

**PLACE YOUR TWO FINGERS AS
HIGH UP ON THE LEG WHERE IT
MEETS THE BODY WALL**

**FEEL FOR A RECESS IN THE
MIDDLE OF THE LEG – WHERE
THE BLOOD VESSELS ARE.**



TOPIC 2: HOW TO KNOW IF IT IS A MEDICAL EMERGENCY

RESPIRATION

**-NORMAL RATES - 10-30 BREATHS PER MINUTE, PANTING CAN
BE UP TO 200/MINUTE**

-IF YOU ARE UNSURE IF A DOG IS BREATHING

- COTTON BALL/TISSUE IN FRONT OF THE NOSTRILS**
- HOLD A MIRROR UP TO YOUR PET'S – CONDENSATION?**



TOPIC 2: HOW TO KNOW IF IT IS A MEDICAL EMERGENCY

RESPONSIVENESS



TOPIC 3: RESPONDING TO AN EMERGENCY

WHEN IT COMES TO CARE – NOTHING CAN REPLACE THE EXPERTISE OF A VETERINARIAN. IF CONCERNED, CONTACT A VETERINARIAN ASAP...

AND REMEMBER...

SAFETY, SAFETY, SAFETY...

IT WILL NOT DO YOU ANY GOOD TO BE PERFORMING AN EMERGENCY PROCEDURE IN THE MIDDLE OF THE HIGHWAY, OR BURNING BUILDING...

TOPIC 3: RESPONDING TO AN EMERGENCY

*HOW TO APPROACH, CAPTURE, AND RESTRAIN
YOUR PET*

**ALWAYS APPROACH A SICK OR INJURED ANIMAL
SLOWLY AND CAUTIOUSLY.**



TOPIC 3: RESPONDING TO AN EMERGENCY

SAFE RESTRAINT

**OBSERVE HER POSTURE AND EXPRESSIONS,
ESPECIALLY HER EARS, TAIL, FUR, AND BODY.**



TOPIC 3: RESPONDING TO AN EMERGENCY

SAFE RESTRAINT

LISTEN TO THE SOUNDS SHE IS MAKING.



TOPIC 3: RESPONDING TO AN EMERGENCY

CAPTURE TECHNIQUES

LEASH

LEASH

- **PREFERABLY NOT A CHAIN LEASH**
- **CAN BE USED AS A NORMAL LEASH IN ORDER TO WALK/TRANSPORT ANIMAL.**
- **CAN ALSO BE USED IN A MUZZLE TECHNIQUE DESCRIBED LATER**



TOPIC 3: RESPONDING TO AN EMERGENCY
CAPTURE TECHNIQUES – TOWEL/BLANKET

- MAY BE HELPFUL IF THE PATIENT IS SMALL (<30 #)
- CAN BE USED TO COVER HEAD/PROTECT YOURSELF WHEN TRANSPORTING TO A VETERINARIAN.



TOPIC 3: RESPONDING TO AN EMERGENCY
CAPTURE TECHNIQUES - GLOVES

**THICK GLOVES WILL HELP YOU SAFELY HANDLE A DOG
BUT CAN CAUSE YOU TO LOSE DEXTERITY AND IT MAY
STILL BE POSSIBLE TO BITE THROUGH THE GLOVED
MATERIAL**



TOPIC 3: RESPONDING TO AN EMERGENCY

CAPTURE TECHNIQUES - MUZZLE

MUZZLE OPTIONS

- GAUZE/LEASH
- BASKET
- OPEN ENDED CLOTH
- OPEN ENDED LEATHER



TOPIC 3: RESPONDING TO AN EMERGENCY

CAPTURE TECHNIQUES - MUZZLE

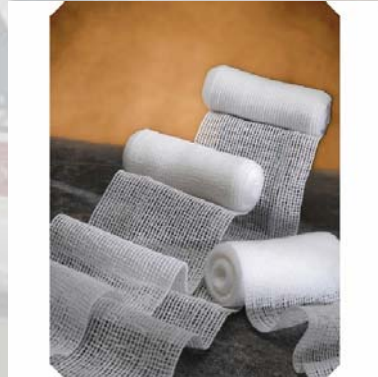
**IT MAY BE EASIER TO
GET THE MUZZLE ON
BY APPROACHING
FROM THE REAR AND
QUICKLY APPLYING
THE MUZZLE OVER
THE NOSE AND MOUTH**



TOPIC 3: RESPONDING TO AN EMERGENCY

CAPTURE TECHNIQUES

**A ROLL OF GAUZE CAN
BE USED TO CREATE A
MUZZLE.**



TOPIC 3: RESPONDING TO AN EMERGENCY

CAPTURE TECHNIQUES

**THE LENGTH MUST BE
ADEQUATE TO WRAP
AROUND THE MUZZLE AT
LEAST TWICE, THEN TIE
BEHIND THE EARS.**



TOPIC 3: RESPONDING TO AN EMERGENCY

CAPTURE TECHNIQUES

A LARGE LOOP IS MADE IN THE CENTER OF THE LENGTH OF GAUZE. THE LOOP SHOULD BE ABOUT 3 TIMES THE DIAMETER OF THE DOG'S MUZZLE.



TOPIC 3: RESPONDING TO AN EMERGENCY

CAPTURE TECHNIQUES

THE LOOP IS PLACED AROUND THE MUZZLE AND PULLED TIGHT AT DORSUM OF THE NOSE. A SINGLE KNOT IS PLACED



TOPIC 3: RESPONDING TO AN EMERGENCY

CAPTURE TECHNIQUES

**THE ENDS OF THE GAUZE
ARE THEN TIED UNDER THE
JAW WITH A SINGLE KNOT.**



TOPIC 3: RESPONDING TO AN EMERGENCY

CAPTURE TECHNIQUES

**THE LONG ENDS OF THE
GAUZE ARE BROUGHT
BEHIND THE EARS AND
TIED IN A SQUARE KNOT OR
A BOW.**



TOPIC 3: RESPONDING TO AN EMERGENCY

SAFE RESTRAINT

- **PROTECTS YOU FROM BEING INJURED (BITTEN, CLAWED) WHILE YOU ARE ASSESSING THE SITUATION AND ADMINISTERING FIRST AID**
- **RESTRICTING YOUR PETS MOVEMENTS TO MAKE INJURIES WORSE**
- **LIMITS MOVEMENT TO ENABLE YOU TO BETTER EVALUATE THE SITUATION**

TOPIC 3: RESPONDING TO AN EMERGENCY

RESTRAINT TECHNIQUES - HEADLOCK

- **PLACE YOUR FOREARM UNDER THE DOGS NECK AND WRAP YOUR ARM AROUND HIS HEAD**
- **FACE TOWARDS THE DOGS BACK**
- **FIRMLY LOCK YOUR FOREARM UNDER THE DOGS HEAD**
- **PLACE YOUR OTHER AR BELLY**

**DO NOT ATTEMPT
WITHOUT A MUZZLE
IN A SICK/INJURED
ANIMAL**



TOPIC 3: RESPONDING TO AN EMERGENCY
RESTRAINT TECHNIQUES –LAYING ON SIDE

- **STAND ALONGSIDE AND FACE THE STANDING DOG**
- **REACH OVER THE DOG TO TAKE HOLD OF THE FRONT AND HIND LEGS CLOSEST TO YOUR BODY**
- **GENTLY PULL THE LEGS FORWARD. AS THE DOG DROPS TO THE FLOOR BE CAREFUL TO PREVENT HIS HEAD FROM HITTING THE FLOOR**
- **USE YOUR LEGS TO CUSHION THE FALL**
- **HOLD THE FRONT AND HIND LEGS THAT TOUCH THE FLOOR STRAIGHT OUT**
- **FIRMLY PUSH THE DOGS NECK DOWN AGAINST THE SURFACE YOU ARE WORKING.**



TOPIC 3: RESPONDING TO AN EMERGENCY
RESTRAINT TECHNIQUES - 2 PEOPLE
SMALLER DOGS

**FOR SMALLER DOGS
IT MAY BE EASIER
TO PLACE A
MUZZLE ON THEM
AND GENTLY PICK
THEM UP AND
CRADLE THEM.**



TOPIC 3: RESPONDING TO AN EMERGENCY

ONCE SAFELY RESTRAINED - ASSESSMENT



TOPIC 3: RESPONDING TO AN EMERGENCY

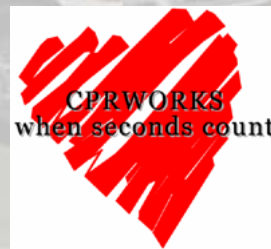
REMINDER TO KNOW THE CLOSET ER PHONE #

BASED ON 3 BASIC PRINCIPLES (ABC'S)

A = AIRWAY

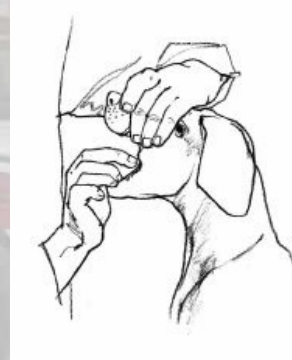
B = BREATHING

C = CIRCULATION



TOPIC 3: RESPONDING TO AN EMERGENCY
BREATHING OR HEART EMERGENCY - AIRWAY

- **CHECKING THE AIRWAY – BLOCKAGE???**
 - **LAY THE PET DOWN ON EITHER SIDE**
 - **GENTLY TILT THE HEAD SLIGHTLY BACK TO EXTEND THE HEAD AND NECK**
 - **PULL THE TONGUE BETWEEN THE FRONT TEETH**
 - **YOU CAN THEN USE YOUR FINGERS TO CHECK FOR AND REMOVE ANY FOREIGN MATERIAL IN THE BACK OF THE MOUTH**



*****DO NOT PLACE YOUR FINGERS INSIDE THE MOUTH OF A CONSIIOUS ANIMAL*****

TOPIC 3: RESPONDING TO AN EMERGENCY
BREATHING OR HEART EMERGENCY

B = BREATHING

- **< 30# - COVER THE SEAL OF THE ENTIRE SNOUT WITH YOUR MOUTH AND EXHALE UNTIL YOU SEE THE CHEST RISE**
- **MEDIUM TO LARGER DOGS GENTLY HOLD THE MUZZLE CLOSED AND PLACE YOUR MOUTH OVER THE DOGS NOSE AND EXHALE UNTIL YOU SEE THE CHEST RISE**
- **GIVE 4-5 BREATHS RAPIDLY AND REASSESS TO SEE IF YOUR PET BEGINS TO BREATHE**

TOPIC 3: RESPONDING TO AN EMERGENCY

BREATHING OR HEART EMERGENCY

REMINDER TO KNOW THE CLOSET ER PHONE #

C = CIRCULATION

- IS THERE A HEARTBEAT OR PULSE?
- HAVE THE DOG ON EITHER SIDE
- PLACE THE DOGS BACK AGAINST YOU FOR SUPPORT
- EXTEND YOUR ARMS AT YOUR ELBOWS
- CUP YOUR HANDS OVER EACH OTHER
- COMPRESS THE CHEST AT THE POINT WHERE THE ELBOW LIES WHEN PULLED BACK (AS DISCUSSED BEFORE)
- COMPRESS THE CHEST ABOUT 1-3 INCHES WITH EACH COMPRESSION
- HOW MANY?



TOPIC 3: RESPONDING TO AN EMERGENCY

CHOKING

SIGNS AND SYMPTOMS

- **ANXIOUSNESS**
- **DIFFICULTY OR INABILITY TO BREATH**
- **PALE OR BLUE GUMS**
- **LOUD BREATHING SOUNDS**
- **PAWING AT THE FACE/MOUTH**

TOPIC 3: RESPONDING TO AN EMERGENCY

CHOKING – COMMON CAUSES

- **CHOKING ON A TOY OR MATERIAL**
- **FOLLOWING AN EPISODE OF VOMIT**
- **TONGUE SWELLING DUE TO ALLERGIC REACTION**
- **TRAUMA TO NECK OR THROAT REGION**
- **SEVERE UPPER RESPIRATORY INFECTION**

TOPIC 3: RESPONDING TO AN EMERGENCY

BREATHING OR HEART EMERGENCY - AIRWAY

CHECKING THE AIRWAY – BLOCKAGE???



TOPIC 3: RESPONDING TO AN EMERGENCY
BREATHING OR HEART EMERGENCY - AIRWAY

ABDOMINAL THRUSTS/HEIMLICH

- **PERFORM ABDOMINAL THRUSTS BY:**
 - **EITHER LIFTING UP THE DOG**
 - **STANDING BEHIND OR NEXT TO THE DOG**
 - **OR LAYING THE DOG DOWN**
- **5 RAPID ABDOMINAL THRUSTS SHOULD BE GIVEN**
- **FOLLOWED BY CHECKING THE MOUTH**

*Heimlich Maneuver
Performed on Dog*

By Aaron Wertheimer
WILLIAMSBURG, NY - On Thanksgiving, people give thanks for all sorts of things. One diminutive dog gave thanks for his life. After a feast hosted by Diane "Lil Dee" Mandelare, many of the party guests, including the British Nicholas Stiggers, chose to head out to local bar Union Pool at approximately 3:00 am. Stiggers left behind his pet dog, Jude. Beth Ann "B.A." Miale and Dave Weston also decided to remain at the apartment. "I was too drunk so I didn't go to the bar," Miale explained. She and Weston were chatting when they heard a sound similar to a brick being dragged across the pavement. It was Jude choking on a piece of steak which he had found on the floor.



TOPIC 3: RESPONDING TO AN EMERGENCY

COMMON HOUSEHOLD TOXINS

**WHAT TO DO IF YOU ARE CONCERNED YOUR PET
INGESTED SOMETHING TOXIC???**

CALL YOUR VET OR POISON CONTROL
IMMEDIATELY

TOPIC 3: RESPONDING TO AN EMERGENCY

COMMON HOUSEHOLD TOXINS



ASPCA THE AMERICAN SOCIETY FOR THE PREVENTION OF CRUELTY TO ANIMALS®

JOIN THE ASPCA TODAY
WE ARE THEIR VOICE.®

Ways To Help

- Donate How
- Shop Online
- Lobby For Animals
- Fight Animal Cruelty
- Adopt

Expert Advice

- Pet Care
- Animal Poison Control
- Animal Behavior
- Disaster Preparedness

About Us

- About the ASPCA
- Pressroom
- ASPCA Blog
- Jobs at the ASPCA
- ASPCA Online Community

Programs

- ASPCA's Mission: Orange



JOIN THE ASPCA
Get our newsletter, lobby for humane laws, and more!
[REGISTER NOW](#)

DONATE TO THE ASPCA TODAY



FREE ASPCA STUFF!

- Get a Free Magnet
- Order a Free Sticker
- Free ASPCA Binotones
- Send ASPCA eCards
- Download Wallpaper
- Free ASPCA Toolbar

facebook myspace.com

Animal Poison Control Center

As the premier animal poison control center in North America, the APCC is your best resource for any animal poison-related emergency, 24 hours a day, 365 days a year. If you think that your pet may have ingested a potentially poisonous substance, make the call that can make all the difference: **(888) 426-4435**. A \$60 consultation fee may be applied to your credit card.

866-426-4435

TOPIC 3: RESPONDING TO AN EMERGENCY

COMMON HOUSEHOLD TOXINS

INFORMATION TO HAVE WHEN CALLING:

WHAT WAS INGESTED

HOW MUCH WAS INGESTED

APPROXIMATE TIME OF INGESTION

PETS WEIGHT

VITAL SIGNS

HAVE BOTTLE/PACKAGE

TOPIC 3: RESPONDING TO AN EMERGENCY

COMMON HOUSEHOLD TOXINS

ANTIFREEZE

CHOCOLATE AND OTHER STIMULANTS

(COFFEE, TEA, SODA)

HOUSEHOLD CLEANERS – BLEACH, DETERGENT

INSECTICIDES

MEDICATIONS

PLANTS (LILY)

TOBACCO

GRAPES, RAISINS

RODENTICIDES

FLEA PRODUCTS

TOPIC 3: RESPONDING TO AN EMERGENCY

COMMON HOUSEHOLD TOXINS – GRAPES/RAISINS

**AS FEW AS A HANDFUL OF RAISINS OR GRAPES
CAN MAKE A DOG ILL; SYMPTOMS INCLUDE
VOMITING, DIARRHEA, ABDOMINAL PAIN, AND
LETHARGY.**

CONCERN: KIDNEY FAILURE



TOPIC 3: RESPONDING TO AN EMERGENCY

COMMON HOUSEHOLD TOXINS – LILY

TOXIC PRINCIPLE: UNKNOWN

CLINICAL SIGNS: VOMITING, INAPPETENCE, LETHARGY, KIDNEY FAILURE, AND DEATH IS POSSIBLE. CATS ARE ONLY SPECIES KNOWN TO BE AFFECTED.

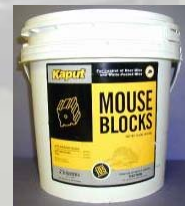


TOPIC 3: RESPONDING TO AN EMERGENCY

COMMON HOUSEHOLD TOXINS

RODENTICIDE(S)

- **THERE ARE SEVERAL TYPES OF RODENTICIDES:**
 - **ANTICOAGULANT - CLOTTING PROBLEMS**
 - **CHOLECALCIFEROL – KIDNEY PROBLEMS**
 - **BRODIFACOU M – NEUROLOGIC PROBLEMS**



TOPIC 3: RESPONDING TO AN EMERGENCY

COMMON HOUSEHOLD TOXINS

CHOCOLATE/CAFFEINE

- **CHOCOLATE IS A CARDIAC AND NEUROLOGIC STIMULANT.**
- **SYMPTOMS INCLUDE VOMITING, DIARRHEA, ABDOMINAL PAIN, TREMORS, HEART RATE INCREASE, AND NEUROLOGIC SIGNS**
- **IN LARGE DOSES, IT CAN CAUSE ARRHYTHMIAS, SEIZURES, COMA, DEATH.**
- **THE DARKER THE CHOCOLATE THE WORSE IT IS...**

TOPIC 3: RESPONDING TO AN EMERGENCY

**COMMON
ER
DISEASES**

TOPIC 3: RESPONDING TO AN EMERGENCY

THE BLOCKED CAT – URETHRAL OBSTRUCTION

WHILE A BLADDER RUPTURE ITSELF IS UNLIKELY, THE CONSEQUENCE OF TOXINS THAT CAN NOT BE EXCRETED IS A LIFE THREATENING PROBLEM, AND CAN BE FATAL WITHIN HOURS



TOPIC 3: RESPONDING TO AN EMERGENCY

THE BLOCKED CAT

COMMON SIGNS OF AN OBSTRUCTED CAT...



TOPIC 3: RESPONDING TO AN EMERGENCY

CUTS/WOUNDS/ANIMAL BITES

**USUALLY WORSE THAN
INITIALLY
LOOKS...ESPECIALLY BITES**



TOPIC 3: RESPONDING TO AN EMERGENCY

BLOAT

(AKA GASTRIC DILATATION AND VOLVULUS)

**CLASSICALLY, THIS CONDITION
AFFECTS DOG BREEDS WHICH ARE
SAID TO BE "DEEP CHESTED,"**



**EXAMPLES:
GREAT DANE, GREYHOUND, SETTER
BREEDS.**



STILL, ANY DOG CAN BLOAT...

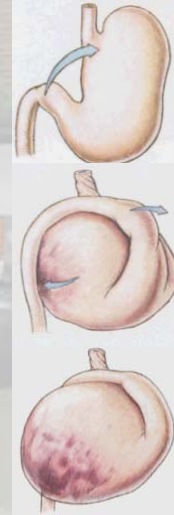


TOPIC 3: RESPONDING TO AN EMERGENCY
BLOAT

(AKA GASTRIC DILATATION AND VOLVULUS)

**ONE OF THE MOST COMMON
CLINICAL SIGNS IS THAT THE PET
APPEARS HIGHLY NAUSEATED AND
IS RETCHING BUT LITTLE IS
COMING UP.**

**IF THIS IS SEEN, RUSH YOUR DOG
TO THE VETERINARIAN
IMMEDIATELY.**



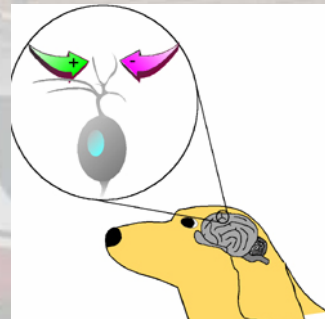
TOPIC 3: RESPONDING TO AN EMERGENCY

SEIZURES

CAN HAPPEN AT ANY AGE

**AS A GENERAL RULE, YOU
SHOULD CALL YOUR VET
AFTER THE FIRST SEIZURE**

**IF MORE THEN 1
SEIZURE IS SUSPECTED
IN LESS THAN 24
YOURS, YOUR PET
SHOULD BE BROUGHT
TO A VETERINARIAN
IMMEDIATELY**



TOPIC 3: RESPONDING TO AN EMERGENCY

SEIZURES – SAFETY FIRST!!!

**PETS CAN NOT
SWALLOW THEIR
TONGUES**

**MOVE TO A SAFE PLACE,
AWAY FROM STAIRS,
PLACES WHERE THEY
MAY INJURE
THEMSELVES**

**IF PUPPY OR KITTEN,
KARO SYRUP OR HONEY
ON GUMS. NOT POURING**



TOPIC 3: RESPONDING TO AN EMERGENCY

VOMITING

NON SPECIFIC SIGN...

**AS A GENERAL RULE, ANYTIME A CAT OR
DOG VOMITS THREE OR MORE TIMES IN A
SINGLE DAY OR 2 OR MORE DAYS IN A
ROW, THERE IS CAUSE FOR CONCERN.**



TOPIC 3: RESPONDING TO AN EMERGENCY

VOMITING – WHAT DO I DO???

REMOVE FOOD AND WATER

THE VOMITING SHOULD BE ABSENT FOR 12-24 HOURS BEFORE WATER/FOOD IS AGAIN OFFERED.

WATER CAN BE OFFERED SPARINGLY, BUT NOT CHUGGING (ICE CHIPS/CUBES, ETC.)



TOPIC 3: RESPONDING TO AN EMERGENCY

HEAT STROKE

DOGS OVERHEAT MORE QUICKLY THAN HUMANS DO!!!

- THEY WEAR THEIR FUR COAT ALL YEAR LONG**
- THEY DO NOT SWEAT.**
- THEY COOL THEIR BODIES BY PANTING WHICH IS MUCH LESS EFFECTIVE THAN SWEATING.**
- EVEN IF YOU ARE COMFORTABLE, YOUR DOG MAY BE TOO HOT!**



TOPIC 3: RESPONDING TO AN EMERGENCY

HEAT STROKE

SYMPTOMS OF HEAT STROKE:

RAPID, FRANTIC PANTING
WIDE EYES
THICK SALIVA
BRIGHT RED TONGUE
VOMITING
STAGGERING
DIARRHEA
COMA

TOPIC 3: RESPONDING TO AN EMERGENCY

HEAT STROKE

FIRST AID FOR HEAT STROKE: COOL THE DOG,

- HOSE HIM OFF
 - IMMERSE HIM IN COOL (NOT COLD) WATER
 - USE FANS, AIR CONDITIONING
 - WHEN HIS TEMPERATURE DROPS TO 103 F, STOP COOLING EFFORTS
- CALL YOUR VETERINARIAN OR GO TO THE ER

TEMPERATURES IN A PARKED CAR CAN REACH
120° F IN AS LITTLE AS TEN MINUTES

BE CAREFUL ABOUT EXERCISING ON HOT DAYS.

TOPIC 3: RESPONDING TO AN EMERGENCY

ALLERGIC REACTION

**ALLERGIC REACTIONS ARE JUST AS COMMON
IN OUR PETS AND CAN OCCUR IN DOGS OF
ANY AGE, BREED, OR SEX.**

**IT GENERALLY TAKES SEVERAL EXPOSURES
BEFORE A REACTION OCCURS, AND
REACTIONS CAN VARY FROM MILD TO
SEVERE.**

TOPIC 3: RESPONDING TO AN EMERGENCY

ALLERGIC REACTION –

MILD TO MODERATE CLINICAL SIGNS

- FEVER
- SLUGGISHNESS
- LOSS OF APPETITE
- HIVES OR WHEELS
- SWELLING
- REDNESS (FACE,
EYES, NECK)
- ITCHING



TOPIC 3: RESPONDING TO AN EMERGENCY

ALLERGIC REACTION - ANAPHYLAXIS

**SEVERE ALLERGIC REACTIONS
PRODUCE:**

- BREATHING DIFFICULTIES**
- COLLAPSE**
- POSSIBLE DEATH.**

**SYMPTOMS USUALLY OCCUR
WITHIN MINUTES FOLLOWING THE
INCITING CAUSE PROCEED
RAPIDLY.**



TOPIC 3: RESPONDING TO AN EMERGENCY

DYSTOCIA – PROBLEM WITH BIRTHING

IN MOST DOGS PREGNANCY LASTS 62-64 DAYS.

STAGE 1: UTERINE CONTRACTIONS BEGIN.

**MOM WILL APPEAR RESTLESS AND MAY PACE, SHIVER,
PANT, OR EVEN VOMIT.**

STAGE 2: HARD LABOR STAGE - THE PUPPY IS EXPELLED.

STAGE 3: EXPULSION OF THE PLACENTA



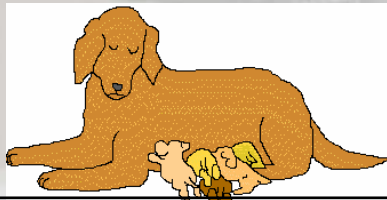
TOPIC 3: RESPONDING TO AN EMERGENCY

DYSTOCIA – PROBLEM WITH BIRTHING

EXPECT ONE PUP EVERY 45 TO 60 MINUTES WITH 10 TO 30 MINUTES OF HARD STRAINING.

CALL YOUR VETERINARIAN IF:

- 30 TO 60 MINUTES OF STRONG CONTRACTIONS OCCUR WITH NO PUPPY BEING PRODUCED.**
- GREATER THAN FOUR HOURS PASS BETWEEN PUPS AND YOU KNOW THERE ARE MORE INSIDE.**
- GREATER THAN 70 DAYS OF GESTATION HAVE PASSED.**



SUMMARY

BEING PREPARED AND KNOWING WHAT IS NORMAL WILL ALLOW YOU TO BETTER BE PREPARED IN AN EMERGENCY

HAVE IMPORTANT INFORMATION AVAILABLE:

**LOCAL VETERINARIAN'S PHONE NUMBER
LOCAL ER'S PHONE NUMBER
ANIMAL POISON CONTROL PHONE NUMBER
PET'S INFORMATION (MEDICATIONS, RECENT WEIGHT, MEDICAL HISTORY. ETC)**

**IF CONCERNED, CONTACT A VETERINARIAN.
BETTER TO BE SAFE THAN...**

REFERENCES



DOG FIRST AID (CAT FIRST AID) AMERICAN RED CROSS




-FIRST AID COMPANION FOR DOGS AND CATS BY AMY SHOJAI



PET LOVER'S GUIDE TO FIRST AID AND EMERGENCIES BY THOMAS DAY


THANK YOU!



PhilaPets.com
So your pets can play while you're away!

Phone: (215) 893-0894
Email: info@philapets.com

* Insured and Bonded
* Veterinary Technicians on Staff
* Pet Sitters International Member
* Best of Philly® 2005



Home

- Home
- About Us >
- Our Services & Prices >
- Orientation Visit Request
- Contact Us
- Client Gallery
- Newsletters
- Jobs
- Pet Resources >
- MyPhilaPets.com

Welcome to PhilaPets.com where your pets can play while you're away! We are a pet sitting and dog walking company in Philadelphia comprised of dependable, trustworthy, and knowledgeable Pet Care Specialists who are dedicated to providing superb quality pet care, attentive customer service, and active community involvement.


We know how hard it is for you to leave your pets behind when you leave for work or go on vacation. Using PhilaPets, you can leave with peace of mind knowing your home and pets are in the best hands possible.

We offer [many services](#) ranging from [daily dog walks](#) to [pet sitting](#) to [medication administration](#). Our [prices](#) are reasonable for the level of care and attention that your pets receive.

We know there are a lot of pet sitting and dog walking companies in the city. So why choose us?

1. Exceptional staff: Our carefully selected Pet Care Specialists ([view bios](#)) are dedicated to giving the best possible care to all pets and their owners. Everyone is a huge animal lover and is extremely responsible and dependable. Our vet techs and vet students on staff are knowledgeable about medical conditions

Home



First ever
**PhilaPets
Community
Night!**

On **Monday, July 21st, 2008** from 7:00pm - 8:30pm, **Dr. Garret Pachtinger**, an Emergency & Critical Care Resident at the Matthew J. Ryan Veterinary Hospital of the University of Pennsylvania, will speak about how to prepare, recognize, and react in an animal-related emergency situation. He'll also talk about common emergencies he sees in one of the **busiest veterinary ERs in the nation**. This event is **FREE** to PhilaPets clients and \$10 per ticket for others. To find out more about this event, [click](#)

MyPhilaPets.com

User Name:

Password:

[Forgot Password?](#)

Proud members of:

